

MODERN LIVING

"LOVE IT" LOCALLY

Transforming your home to adapt to the "new normal"



London SW10

STAY OR MOVE: TIME TO DECIDE

"Renovate or Relocate?"

Emerging from lockdown living has changed the way in which we use and see our homes significantly. Lifestyle is expressed in our work, behaviour, leisure and social patterns – it's a combination of what we repeatedly do on a daily basis. Changing lifestyles requires changes to our environment.

We're here to help women (45-55 years) and their partners who need to transform their existing living arrangements to fit their new lifestyle. We believe in women supporting women to create safe places that allow you to maximise your potential. We're here to help you realise:

1. Additional value and
2. Your forever home now.

WHAT'S IN THIS ISSUE?

1. ADAPTING TO COVID
2. 9 STEPS TO YOUR DREAM HOME



ADAPTING TO COVID

"Hybrid working from home"

"An architect's like the conductor of an orchestra"

"who plans the entries/exits of musicians as does the architect"



"the musicians are the designers, contractors, and suppliers"

"who create a symphony as they work to create a building"

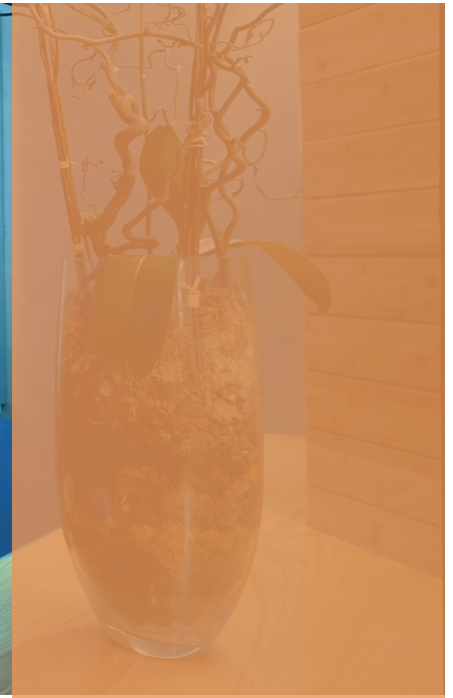
Our team has always had a passion for women's issues striving for greater equality in the practice of architecture. We're reinventing the practice to engage more with women and their partners to solve new domestic challenges created by lockdown living

We're offering architectural interior design solutions that will accommodate your new lifestyle. We'll also give you preliminary build costs for any alternatives to the building we propose and the added value to your home.

We base our pricing at this initial stage on the additional value we can achieve for your property rather than the overall contract value that is traditional practice. This paradigm shift means we're always working to benefit you and your bottom line which works for us too.

"Your forever home awaits!"





9 STEPS TO YOUR DREAM HOME

"Transform your present day living"

Before lockdown we'd have initial physical meetings. What happens now is:

1. A Referrral
2. A virtual client meeting to see your premises and discuss your brief
3. A physical meeting to decide whether you'd like to work with us
4. Appoint us as your designers and pay a 50% deposit
5. Surveyors will visit to prepare existing floor plans
6. We'll prepare initial layout proposals
7. A client meeting to discuss those proposals/ agree your preferences
8. Give final design and preliminary cost and additional value achieved
9. Final payment made based on

additional value or minimum charge. Next steps will depend on your wish to proceed further with building works and a contractor as required.

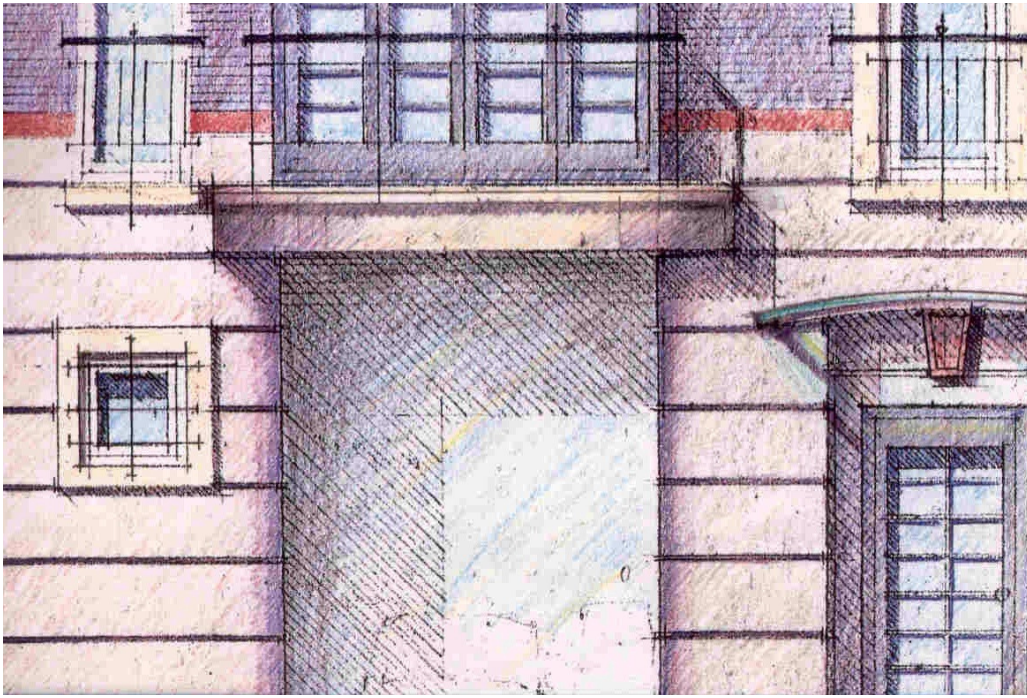
Take the first step and have a free one on one consultation. Email us at admin@fa-global.co.uk and modernise to see results you've been dreaming of now.



"Imagine"

"Take the first steps to your dream home."





Copywriting: Francetta Evans-Anfom
Graphic Design :Elizabeth Akamo.

London W1



Annette Amanda Oyékunlè Fisher

CONTACT US

"About FA Global and our managing partner"

We are building a practice that brings more equality to the profession, and our projects employ those talented and underrepresented groups across all aspects of the supply chain. Our collaborations make our team grow. Our sector experience is in Residential, Leisure/Community Buildings, Commercial Offices, and Mixed-Use Developments. We support local businesses and respect our clients. A win-win for all.

Annette Amanda Oyékunlè Fisher started her love of architecture when working as a teenage student in an architect’s office. The only daughter of professional parents, she was sent to a private tutorial college in Oxford for A levels, and then after first year at Bath University finished her 7-yr training at University of Strathclyde, Glasgow. After that she moved to London and worked for major commercial architects’ practices including, Rolfe Judd, TP Bennett, and Whinney Mackay Lewis.

Fast forward 30 years and she’s an award-winning architect who practices internationally. Also, a former RIBA Vice President, Council member and Nominated Presidential Candidate.

Member of

unionne

a consortium of female led architects practices

unionne limited is supported by scott brownrigg

www.fa-global.co.uk/project-management-interiors

*“Your
next step
contact
us!”*

 [annettefisherarchitect](https://www.pinterest.com/annettefisherarchitect)

 [@annettefisherarchitect](https://www.instagram.com/annettefisherarchitect)

 [FA Global](https://www.facebook.com/FA_Global)

 [FA Global](https://twitter.com/FA_Global)

 [FA Global](https://www.linkedin.com/company/FA_Global)

